

Turn Your Eyes

(based on the recording by Sovereign Grace Music)

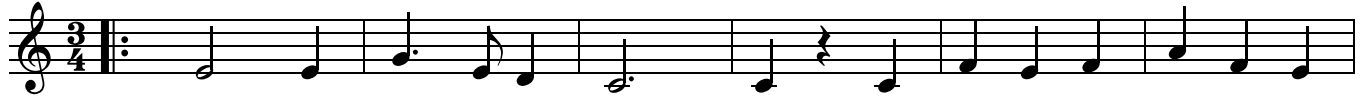
Original Words and Music by
Helen H. Lemmel

Add'l. Words and Music by
George Romanacce, Nic Trout,
Kevin Winebarger and Nathan Stiff

♩ = 100

VERSE 1 & 2

C Em Am F



1. Turn your eyes up - on Je - sus, look full in His won - der - ful
2. Turn your eyes to the hill - side where jus - tice and mer - cy em -

7 G C Em F Dm



face. And the things of earth will grow strange - ly dim in the
-brace. There the Son of God gave his life for us, and our

1. TURNAROUND 1

13 C/G G C Em Am F



light of His glo - ry and grace.
meas - ure - less

2. CHORUS

19 G C F C



debt was e - rased. Je - sus, to You we lift our eyes. _____

26 F Am G (C/E) F



Je - sus, our glo - ry and our prize. _____ We a - dore - You, be -

CCLI Song # 7120053

© 2019 Sovereign Grace Praise | Sovereign Grace Songs | Sovereign Grace Worship
For use solely with the SongSelect®. Terms of Use. All rights reserved. www.ccli.com
CCLI License # 33069

2nd time to Coda ⊕

31 G Am C/E F G

-hold _ You, our Sav-ior ev - er true. Oh _ Je - sus, we turn our eyes to

TURNAROUND 2

36 C Em Am F C

You.

VERSE 3

41 G^{sus} F C Em Am

3. Turn your eyes to the morn -

47 C/G F G C

-ing and see Christ the li - on a - wake. What a glo - rious

53 Em Am F

dawn, fear of death is gone, for we

56 C/G G C

car - ry His life in our veins.

D.S. al Coda

⊕ Coda


TURNAROUND 3

VERSE 4

60 G C G/C F/C C


turn our eyes to You. 4. Turn your

66 G/C F/C C F/C G/C



eyes to the heav - ens; our King will re - turn for His own.


72 C Dm⁷ C/E Am G F



Ev - ry knee will bow, ev - ry tongue will ___ shout, _ "All _"


77 C/G G^{sus} C F

CHORUS



glo - ry to Je - sus a - lone!" ___ Je - sus, to

82 C F Am



You we lift our eyes. ___ Je - sus, our glo - ry and our prize. ___

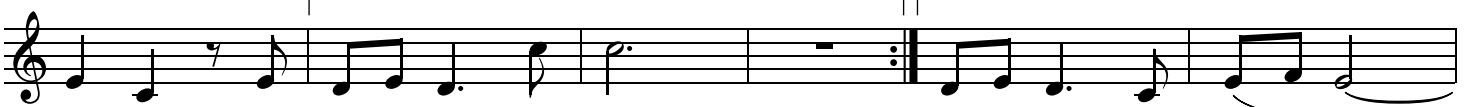
88 G C/E F G Am C/E



___ We a - dore You, be - hold You, our Sav - ior ev - er true. Oh ___

93 F


1. G C	2. G Am ⁷
-----------	-------------------------



Je - sus, we turn our eyes to You. turn our eyes to You. ___

TAG

99 F G



___ Oh ___ Je - sus, we turn our eyes ___ to You. ___

OUTRO

103

C

Em

Am

F

C

Musical notation for the outro of 'Turn Your Eyes'. The notation is on a single staff with a treble clef. It consists of five measures. The first measure has a C chord and contains a quarter note G4, an eighth note A4, a quarter note B4, and a quarter note C5. The second measure has an Em chord and contains a quarter note G4, an eighth note A4, a quarter note B4, and a quarter note C5. The third measure has an Am chord and contains a half note C4. The fourth measure has an F chord and contains a quarter note G4, a quarter note A4, and a quarter note B4. The fifth measure has a C chord and contains a half note C4. A horizontal line is drawn below the first two measures, and a fermata is placed over the final note of the fifth measure.